

Strategic Plan for MSE within the SEFSC

March 2023

Contact: cassidy.peterson@noaa.gov

Table of Contents

Table of Contents	0
Executive Summary	1
Box 1: MSE Priorities in the SEFSC	2
Background	2
Mission Statements of SEFSC MSE Technical Team	5
Purpose	5
Challenges	5
Highlighted Flagship MSEs for the SEFSC	6
1. Dolphin	6
2. Gulf of Mexico Shrimp	6
3. Kemp's Ridley Sea Turtle	7
MSE Priorities in the SEFSC	8
1. Capacity development	8
2. Explore Data-Limited MPs and Empirical MPs	9
3. Explore Interim Approaches and Assessment Frequency	11
4. Explore Management Procedure Performance Across Climate Change and Nonstationarity	12
5. Consider Broader Ecosystem Impacts of Fisheries Management	13
6. Focus on Recreationally Dominated Fisheries and Non-constant Allocation	14
7. "Right-weight" Assessment Complexity	15
8. Prioritize data availability / quality / efficiency	16
9. Contribute to RFMO-sponsored MSEs	17
10. Build / Automate MSE Tools and Packages	17
11. Desk MSEs to Improve Understanding of Population Dynamics, Stock Assessment, and Management Processes	18
Summary	21
References	20
APPENDIX 1: SSMSE Project Ideas	26
APPENDIX 2: SEFSC MSE Technical Team TORs	29

Executive Summary

NOAA Fisheries and the Southeast Fisheries Science Center are embarking on a process of strategically using Management Strategy Evaluation (MSE) to advance fisheries monitoring, assessment, and management. The SEFSC will follow the National MSE Working Group's vision statement:

"We anticipate that MSEs will result in improved understanding of our ability to assess stocks, ecosystems, and fishing and coastal communities. This will lead to more efficient allocation of survey and assessment resources, greater potential for stakeholder ownership of the process and, ultimately, increased economic benefits and improved capacity for sustainable management for current and future generations."

MSE is a framework in which the performance of candidate management procedures is tested across a range of system uncertainties in a closed-loop simulation (Punt et al. 2016). Management procedure performance is reflected by how well each management procedure meets the fishery management objectives, which sometimes require stakeholder input to identify (e.g., Goethel et al. 2019) and which are operationalized into quantitative performance measures.

Given the highly technical and resource-heavy nature of the MSE process, many internal and external partners and collaborators will be necessary to truly make the most of this effort to advance MSE applications within the SEFSC. This includes collaborators with relevant expertise in stock assessment, ecosystem modeling, social science, economics, fishery management, survey design and data collection, species biology and ecology, and computer programming, among others.

This document identifies the goals of the MSE enterprise and presents the areas in which MSE would be most beneficial to advancing the Southeast Fisheries Science Center's mission of "providing the scientific advice and data needed to effectively manage the living marine resources of the Southeast region and Atlantic high seas" (see Box 1). We further expand on the flagship MSEs that have been initiated within the Center, which each have the potential to be paradigm-shifting or have significant ramifications for the way in which fisheries are assessed and managed within the Southeast and more broadly. We outline activities that are ongoing to meet the MSE strategic objectives within the Center and provide future research directions.

Box 1: MSE Priorities in the SEFSC

1. Capacity Development
2. Explore Data-Limited Management Procedures
3. Explore Interim Approaches and Assessment Frequency
4. Explicitly Include Management Procedure Performance in the Face of Climate Change
5. Consider Broader Ecosystem Impacts of Fisheries Management
6. Focus on Recreationally Dominated Fisheries
7. “Right-Weight” Assessment Complexity
8. Prioritize Data Availability / Quality / Efficiency
9. Contribute to Externally-Sponsored MSEs
10. Build / Automate MSE Tools and Packages
11. Desk MSEs to Improve Understanding of Population Dynamics, Stock Assessment, and Management Processes

Each priority is discussed in more detail below.

Background

The management strategy evaluation (MSE) framework is a way to explore the performance of various management procedures (MPs) by simulating the feedback of an MP on the state of the fishery (e.g., De Oliveira et al. 2008; Holland 2010). MPs are pre-defined decision rules that serve to adaptively adjust management advice based on the status of the stock. An MP is comprised of an observation model or data-generating process, estimating model (EM; e.g., assessment model or suitable approximation of stock status), harvest control rule (HCR; designed to reduce the MSY-based overfishing limit to account for stock status and sources of scientific and implementation uncertainty), and implementation model (including implementation uncertainty; Sainsbury et al. 2000). An operating model (OM) represents a unique hypothesis of the state of a stock and fishery on which the performance of various MPs are simulation tested.

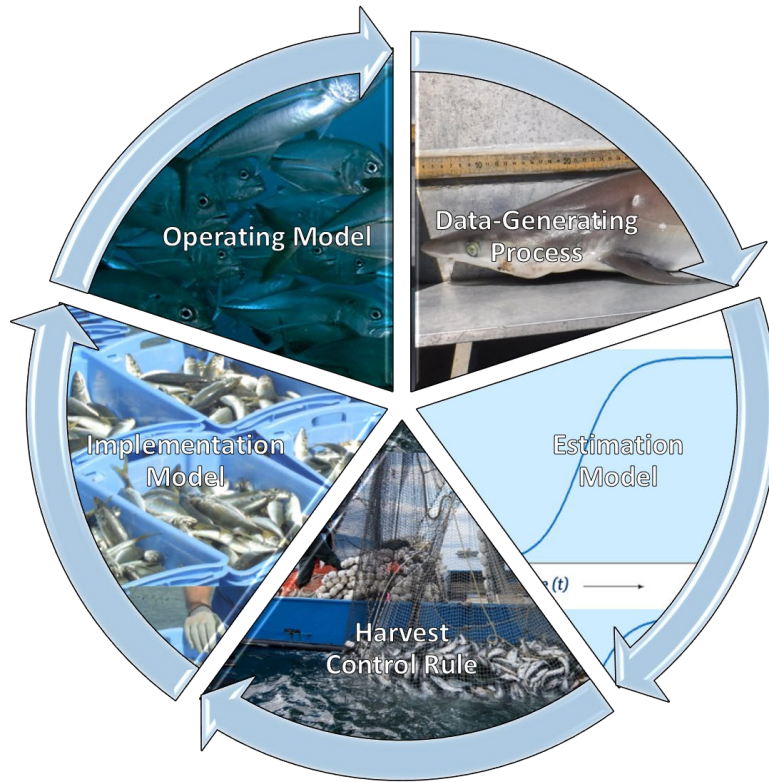


Figure 1. The MSE process, including the operating model (OM), observation model or data-generating process, estimating model (EM), harvest or catch control rule (CCR), and the implementation model.

In addition to the technical modeling exercise, MSE application involves defining the management objectives of the fishery (Sainsbury et al. 2000; Holland 2010; Punt et al. 2016), clarification of uncertainties within the system (Francis & Shotton 1997, Butterworth and Punt 1999; Rademeyer et al. 2007; Punt et al. 2016), choosing candidate management procedures/harvest strategies (Deroba and Bence 2008; Punt 2010; Kvamsdal et al. 2016), and presentation of easily digestible results (Francis and Shotton 1997; Punt et al. 2016; Miller et al. 2019). Stakeholder input is recommended when the MSE is intended for real-world application (Goethel et al. 2019, Feeney et al. 2019; Miller et al. 2019) or where the management goals and uncertainties are not fully identified (e.g., Walter et al. *in review*), whereas stakeholder input may not be strictly necessary (or worthy of additional expense) when asking more general management questions (“desk MSEs”).

After conducting an MSE for a fishery, we should more fully understand the tradeoffs of various management objectives, eliminate candidate MPs that are not robust to uncertainties, consider the fishery across a broader time-horizon, and potentially increase transparency and facilitate buy-in to the management process by stakeholders (Sainsbury et al. 2000; Holland 2010; Punt et al. 2016).

Given the thorough simulation framework, MSEs can be used to address any questions related to the various components of an MP or OM (see figure below for examples).

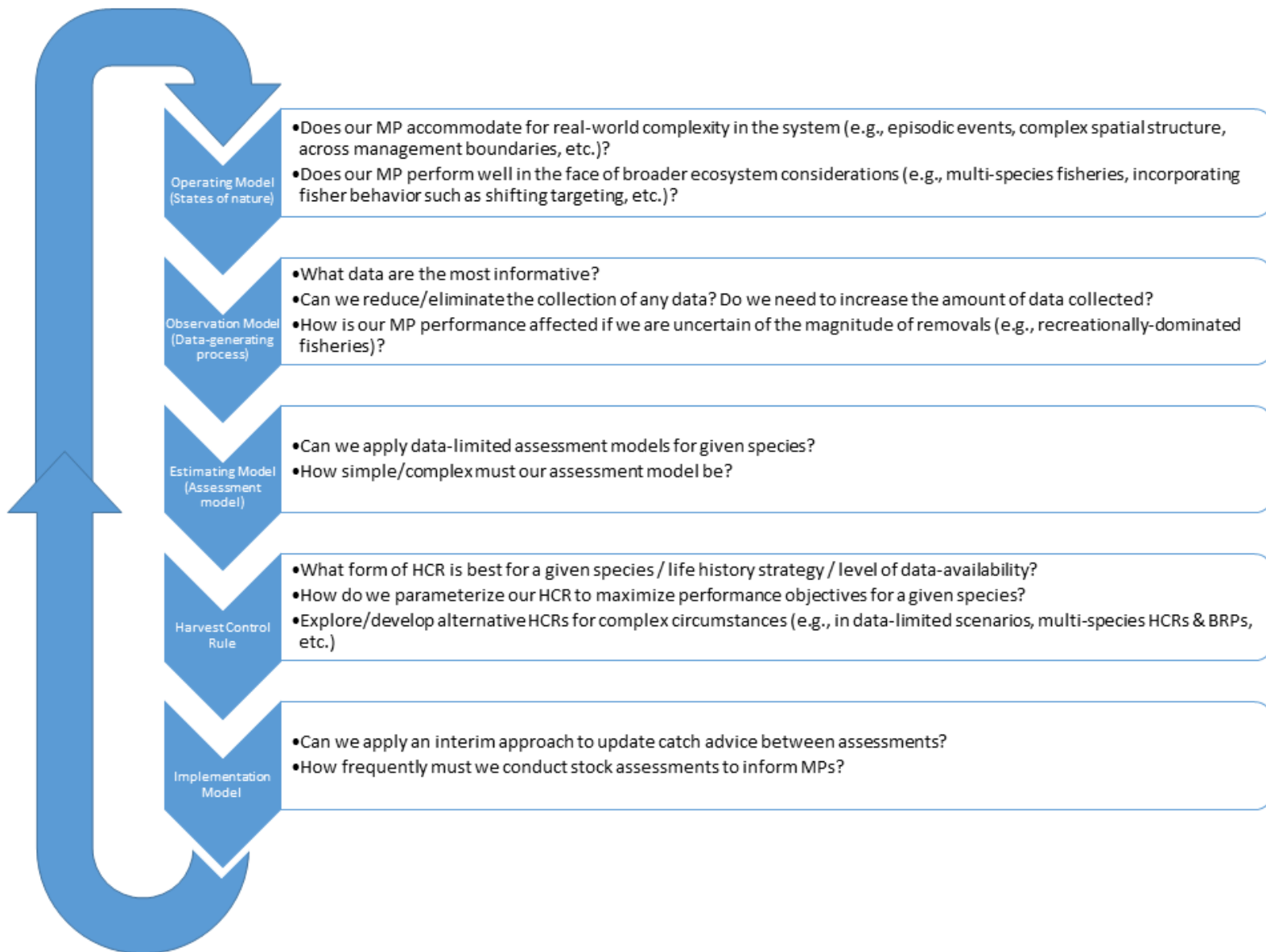


Figure 2. Example research questions that can be asked within each step of the MSE.

Mission Statements of SEFSC MSE Technical Team

- To employ full stakeholder MSEs to develop robust management procedures for high-profile and high priority societal management objectives, ideally ones that might change existing management paradigms
- To employ desk MSEs to improve our internal processes and scientific understanding
- To prioritize MSE projects that will have the greatest impact for the SEFSC and ensure activity alignment with strategic goals

- To coordinate MSE activities within the southeast management region and maximize capacity to conduct MSEs

Purpose

This document highlights and prioritizes the areas in which MSE can be most beneficial to the SEFSC (see Walter et al. *in press* for further details on MSE prioritization).

Challenges

Management strategy evaluation requires significant resources to conduct. Stakeholder participation is expensive and time consuming, typically requiring several workshops wherein stakeholders are familiarized with the MSE process and goals prior to the iterative interaction required to inform the development of management objectives and relevant stock and fishery uncertainties. Even desk MSEs, which lack stakeholder participation, require significant resources, including: highly skilled analysts and computer programmers to develop operating models and the MSE simulation loop; large amounts of time; substantial computing resources to carry out the simulation; and frequently collaborations with interdisciplinary researchers to inform the model structure, inputs, and outputs. Further, MSEs ideally require data and expert understanding of the biological/ecosystem, socioeconomic, and fishery dynamics that are being modeled.

The scientific expertise, time, computing power, and number of stakeholders and researchers required will vary based on the complexity and management objectives to be addressed. As such, MSE activities will be maximized by utilizing pre-built software (e.g., SSMSE, openMSE, etc., to avoid ‘reinventing the wheel’), internal technical teamwork, and collaboration with external partners. Due to the heavy lifting required by MSEs, it is imperative to ensure that the most significant MSEs are prioritized, provided sufficient resources, able to leverage existing research efforts as available, and not redundant of ongoing activities.

Highlighted Flagship MSEs for the SEFSC

Below we introduce flagship MSEs that are of priority in FY22-FY23. Flagship MSEs are those that are potentially paradigm shifting and that will substantially advance our ability to monitor, assess, and manage living marine resources in the Southeast region and Atlantic high seas.

1. Dolphin

Development of empirical MPs for dolphin

Dolphinfish are an iconic species of significant demand in the southeast US. Recent indicators of reduced abundance in south Florida have resulted in stakeholder concern regarding the status and current management approach for dolphin. However, data limitation combined with the international distribution and exploitation of dolphin has largely precluded development of a stock assessment. Dolphin are a short-lived productive species, whose productivity is largely environmentally-driven. As such, empirical (or indicator-based) MPs may be a more appropriate mechanism to generate catch advice compared to more traditional model-based MPs or to the broadly utilized best-stock assessment plus projection process. The goal of this MSE is to develop an empirical MP that best achieves the suite of operational management objectives for the US Atlantic (mainly South Atlantic) fishery. Operating models will account for space, seasonality, movement, environmental stochasticity, uncertainty in international fisheries, and differences in regional fishery practices and objectives. The empirical or index-based MP will dynamically adjust the allowable biological catch and/or the overfishing limit based on indicators of abundance.

A key element of the project will build on recent stakeholder participatory workshops to quantify operational management objectives with probabilities and timelines, elucidating key uncertainties and features of the underlying simulation or operating models and developing potential indicators for empirical MPs. These are planned for late 2022 and early 2023.

This MSE will be led by Matt Damiano, a PhD student at NCSU, and include partners at NCSU (Jie Cao), SEFSC (Cassidy Peterson, Kyle Shertzer, Mandy Karnauskas, Matt McPherson), SAFMC (Julia Byrd, John Hadley), external experts in the field (Wess Merten; Beyond Our Shores), and potentially others.

2. Gulf of Mexico Shrimp

Empirical dynamic modeling (EDM) to manage shrimp in the Gulf of Mexico

Similar to dolphin, shrimp in the Gulf of Mexico are very short-lived with variable stock dynamics and productivity. While the TAC is currently set very high for shrimp, the fishery is functionally driven by economic considerations and bycatch-related effort restrictions. Given that the drivers of fishing activity are unconventional, stakeholder input may be useful to identify the fishery management objectives of the shrimp stocks.

Gulf of Mexico shrimp are currently assessed with a full integrated statistical-catch-at-age model. The current delay between data collection, assessment, and management implementation is longer than the lifespan for Gulf of Mexico shrimp. This management delay, combined with the comparatively rigid structure of an assessment model compared to the highly variable dynamics of the stock, begs the question of whether a fully parameterized Stock Synthesis assessment model is the most appropriate way to manage them. Indeed, empirical MPs have proven useful for short-lived and highly variable fisheries (de Moor et al. 2011; Sánchez-Maróño et al. 2021; Blamey et al. 2022).

Empirical dynamic modelling (EDM) has proved useful for describing and forecasting time-series within non-linear, dynamical systems (Munch et al. 2018; 2020). EDM has been applied to Gulf of Mexico shrimp (Tsai et al. 2022) and we ask whether EDM's exceptional

forecasting ability could be co-opted for use in providing management recommendations for short-lived species (e.g., consider the EDM forecast as an index within an empirical MP).

This project will be conducted in collaboration with lead shrimp assessment analyst, Molly Stevens (SEFSC), Steve Munch and post doc Cheng-Han Tsai (SWFSC & USC), and Michelle Masi (SERO)

3. Kemp's Ridley Sea Turtle

Explore protected resource conservation strategies: Kemp's ridley case study

The MSE process was pioneered by the International Whaling Commission (IWC) beginning in 1974 (Punt and Donovan, 2007). Subsequent applications of MSE on protected resources have been conducted by the IWC (see Punt and Donovan, 2007 and references therein) and centered around testing the robustness of the Potential Biological Removal approach to determine maximum levels of human-induced mortality that do not inhibit marine mammal recovery (Wade 1998; Punt et al. 2020). We seek to apply MSEs to protected species in the Southeast region, following these previous MSE examples, to conceptually explore conservation procedures. Example questions that can be posed include: how will current conservation measures be impacted by future nonstationarity, including climate change and anthropogenic activities?; are there other alternate conservation procedures that may be able to more quickly or successfully reach the conservation goals for the target species?; how can we design research surveys to maximize their impact on recovery efforts?; what value can novel data collection schemes (like close-kin mark-recapture) add in the assessment and recovery of protected species?; what uncertainties have the greatest impact on conservation procedure performance, and therefore should be prioritized for future research?; etc.

Our initial MSE application for protected species will use Kemp's ridley sea turtles as a case study. We will explore how the current and alternate conservation procedures perform for Kemp's ridley sea turtles across a suite of current and future uncertainties. Here, we describe conservation procedures as the process by which data are collected, the way in which that data is used to monitor the population, and the calculation, designation, and implementation of any conservation measures (e.g., take limits) applied on behalf of the species.

The primary research objective of this study is to develop and test conservation procedures that result in the largest increase in population growth rate, given a suite of potential underlying biological hypotheses for the population dynamics of this species, such as mechanisms for density-dependence (nesting sites vs. foraging areas), fishing gear "catchability" (probability of take given turtle-vessel proximity), age-class specific movement patterns, and fishing vessel spatial movement patterns. The impact of these various conservation procedures are measured by their ability to maximize the conservation goals for the species, as defined by stakeholders (which includes the protected species population, any relevant ecosystem or environmental linkages, human or other socioeconomic considerations, or any other dimension identified by stakeholders that should be explicitly considered in modeling the conservation of the target population). Conservation objectives which are ideally defined by stakeholders and must abide by the legal

mandates of the ESA and MMPA. Importantly, we stress that we are not aiming to change any ESA conservation or recovery objectives, but explore multiple paths that managers could use to best achieve existing recovery objectives.

Additional research questions that can be explored within this MSE framework include testing research and monitoring strategies (e.g., what is the benefit to additional data-generation schemes?), and/or conservation strategy-related questions (e.g., consider bycatch limits by gear, time/area closures, or other adaptive regulations) through projection simulation analyses with a closed feedback loop (see Figure 2). The results of this study will provide clarity on future research prioritization efforts (e.g., which uncertainties have the greatest impact on conservation success?) and will help to refine future monitoring efforts for Kemp's ridley sea turtles in the most cost-effective manner (e.g., should we prioritize in-water population surveys, dedicated tagging, low altitude high def aerial/uncrewed systems surveys, close-kin mark-recapture analyses).

This MSE will likely need to be multi-species/ecosystem in nature, by including interacting fisheries (namely the shrimping fleet). For example, if we only consider Kemp's ridley sea turtles without any other species or fishery impacts, the most effective conservation strategy would be to prohibit all takes. However, in practice, this would be an unreasonable approach given the interactions that Kemp's ridley sea turtles have with directed fisheries. Following the National Bycatch Reduction Strategy, the U.S. should prioritize research on bycatch rates and bycatch reduction to sustainably manage fisheries with the goal of recovering and conserving protected species (NMFS, 2016).

Stakeholder input is likely to be necessary, as there are competing and disenfranchised stakeholders and clear operational conservation objectives have not already been defined. Operational conservation objectives differ from conceptual objectives in that they are explicitly defined, quantitative, measurable metrics that reflect the stated objectives. For instance, whereas a conceptual conservation objective could be to recover the population, an example of an operationalized objective could be to ensure that the population is recovered, as measured by at least x number of nesting females, by the year y with at least a p% probability across all of the reference operating models considered. As such, this MSE will involve dedicated stakeholder workshops, wherein all interested stakeholders, as defined as any individual with a vested interest in the resource, are asked to identify conservation goals and system uncertainties to which the resulting procedure should be robust (e.g., offshore wind, climate change considerations, etc.). Operational objectives are used to design performance metrics, or metrics from the operating model simulations that quantitatively reflect conservation objectives that will be measured through the MSE analysis to measure conservation procedure performance. Stated recovery goals and down- or delisting criteria can be explicitly measured as performance metrics.

Notably, as scientists, MSE analysts and Center staff should remain impartial and not make any management decisions. Managers should accordingly play a key role throughout the MSE process in identifying how management or conservation procedures will be implemented operationally. The Center aims to work with the Office of Protected Resources and Southeast

Regional Office to identify the path to translating this research into effective management actions, if desired.

SEFSC partners include Paul Richards, Melissa Cook, Chris Sasso, and Joe Pfaller, and Jennifer Lee is a collaborator representing SERO. Susan Piacenza (Oregon State University) has been identified as the external partner who will lead this study, which will involve building a spatially-explicit, individual-based MSE for Kemp's ridley sea turtles using Netlogo.

MSE Priorities in the SEFSC

1. Capacity development

Specific goals:

1.1 Develop technical team of MSE collaborators

1.2 Collaborate across Science Centers and Councils to develop best practices for MSE applications within the US

A main limitation to MSE activities within the center is a lack of available scientists with the necessary availability and training to conduct MSEs; this lack of personnel is exacerbated by the extraordinarily long time required for a single desk MSE. Full stakeholder MSEs are even more expensive and even more time-consuming, requiring multiple rounds of stakeholder meetings, collectively consisting of training, clarifying management objectives, developing alternative MPs, refining management objectives and MPs, and dissemination of results (e.g., Goethel et al. 2019).

Within the center, the optimal way forward is likely to develop a technical team (TT) approach to MSEs. This approach would 'borrow' analysts with appropriate expertise from various branches/departments to participate in MSE activities (with supervisory permission). A dedicated working group would also serve to maximize, prioritize, coordinate, and track MSE activities, ensure activity alignment with NMFS/SEFSC strategic goals, and serve as a pool of core collaborators when MSEs are needed.

Collaborations between center scientists and outside collaborators, including those from the Councils and from academic institutions, are encouraged to maximize MSE activities.

The National MSE Working Group brings together MSE experts across the regional Science Centers to collaborate and develop best practices for MSE within the US. Discussion and creation of these best practices will enhance subsequent MSE activities and ensure that MSEs are appropriately prioritized and used to provide management advice (e.g., Walter et al. in press; currently developing guidance for MSEs within the US Federal Management framework).

Actions:

- Pursue external collaborations (university partners, SAFMC, ICCAT)
- Introduce and socialize MSE and MSE technical team to SEFSC Leadership and Staff

and external partners

- National MSE working group: Walter et al. in press; developing guidelines for conducting MSEs within the US Federal Management framework

2. Explore Data-Limited MPs and Empirical MPs

Specific goals:

8.1 Empirical MPs

8.1.1 Tune to specific stocks

8.1.2 Consider alternative indicators (beyond indices, mean length, etc.) and multiple indicators

8.1.3 Deal with lack of stock status determination -- modify empirical MPs to produce stock status determination or incorporate DLM approaches to get stock status within empirical MP approach

8.2 Caribbean stocks

8.3 Recreationally-dominated species

8.4 Transient /shared stocks

Within the Southeast region, including the Caribbean, the majority of stocks may be described as data-poor. Many of these stocks cannot be assessed using a conventional, integrated, statistical catch-at-age stock assessment due to limited or completely un-available data. Incomplete data may also affect species for which total removals are uncertain, like recreationally-dominated species or transient, highly-migratory stocks. Data poor species need to be assessed and managed differently, using different assessment approaches and different management procedures. In some management organizations, fisheries managers utilize a ‘tier’ approach, wherein species are assessed and managed differently according to the data available for each stock (Gulf of Mexico, Caribbean). Some stocks may be best managed as part of a species complex.

There is a whole library of data-limited models (DLMs) to aid in determining stock status and providing management advice for stocks (MacCall 2009; Carruthers et al. 2014; DLMtool, Carruthers and Hordyk 2018). Accordingly, there is a corresponding body of research dedicated to data-limited MPs (Dowling et al. 2008; Carruthers et al. 2014, 2016; Berkson and Thorson 2015; Sagarese et al. 2018, 2019). Contrary to conventional model-based MPs, empirical MPs are a data-limited approach to manage fisheries, requiring only an indicator of abundance.

Empirical MPs regularly adjust TAC based on the behavior of the chosen indicator. While the indicator is typically an index of abundance, other indicators should be explored to apply to species for which a representative index of abundance is unavailable or unsuitable (e.g., data limitations or indices that are representative of local availability rather than stock-wide dynamics, are particularly variable or unrepresentative, or for which there are clear trends in residuals from a fitted assessment model), like mean length in commercial catches or environmental indicators. Further, guidance detailing choice in indicator should be developed for species for which traditional assessment models are unavailable.

Empirical MPs have value beyond data-limited scenarios, and should also be considered for data-rich or data-moderate species (e.g., Atlantic bluefin tuna, Carruthers and Butterworth 2018) and as interim assessment approaches (Huyhn et al. 2020). For short-lived species whose productivity is largely environmentally-driven, empirical MPs may be a more appropriate mechanism to generate catch advice compared to more traditional model-based MPs (e.g., a stock assessment process). Empirical MPs have the flexibility to incorporate climatic or environmental drivers of regional abundance and/or local availability.

Empirical MPs require species-specific tuning and refinement testing before they should be implemented in practice (e.g., see Butterworth ICCAT papers for ABTMSE), as their implementation relies on selecting an appropriate indicator, tuning the magnitude of change of the TAC relative to the change in the indicator, testing other relevant controls (e.g., TAC caps, restrictions on the allowable annual percent change in TAC, additional buffers on TAC), and tuning to achieve appropriate management objectives.

Research that demonstrates the situational value that empirical MPs may serve (e.g., for short-lived species, to reduce the data-assessment-management lag, in the face of future nonstationarity, etc.) is also warranted, as it may facilitate added buy-in to the empirical MP process. Another consideration is the lack of stock-status determination provided by empirical MPs. Conceptual research that justifies lack of regular stock status determination required for providing management advice, incorporates stock status estimation procedures from DLM approaches into an empirical MP framework, or explores the possibility of obtaining relative stock status information from the empirical indicator is prioritized.

Actions:

- Atlantic Bluefin Tuna MSE (ABTMSE); ICCAT
- Dolphin empirical MP (Damiano, Cao, Shertzer, et al.)
- Empirical dynamic modeling (EDM)-based MP for GOM shrimp
- Empirical vs. model-based MP performance in the face of climate-induced nonstationarity (ongoing; Peterson et al.)
- Consider past activities: SEDAR 46 2016, SEDAR 49 2016, Sagarese et al. 2018, 2019

3. Explore Interim Approaches and Assessment Frequency

Specific goals:

- 2.1 Explore / test interim assessment approaches
- 2.2 Tune interim assessment approaches to specific fisheries
- 2.3 Identify impacts of altered / reduced assessment frequency
- 2.4 Measure the impact of time-lags within the assessment process
- 2.5 Provide guidance on monitoring MPs after implementation to ensure that future conditions are not outside the range of simulated OMs

The demand for full stock assessments outstrips the SEFSC capacity to conduct assessments (Methot 2015; Lynch 2018), emphasizing the need to explore the effects of assessment frequency and mechanisms to provide management advice between stock assessment years (e.g., empirical interim approaches; Huynh et al. 2019). In addition to freeing time for additional assessments, these approaches may also allow additional time for assessment analysts to conduct related research with the goal of advancing assessment methods.

Example applications include testing various configurations of empirical, interim control rules for updating catch advice and tuning these control rules to specific fisheries. There is a lack of guidance governing the ‘best’ way to tune empirical MPs, so simulation studies that provide guidance on tuning empirical MPs is warranted. Considering the specificity of interim approaches, more time may be required for developing fishery-specific interim MPs. In addition to understanding how to develop these empirical MPs, it is also important to define scenarios in which these approaches may not be appropriate. Consider a survey with ‘red noise’ inflicted by some temporal pattern in availability or catchability; using this survey as the basis for interim assessment advice would intuitively be ill-fated, though full impacts on the fishery remain unexplored through conceptual simulation studies.

Understanding the effects of altered assessment frequency on management objectives (e.g., impacts on total catch, probability of overfishing, economic impact, etc.) would support more appropriate decision-making regarding optimal use of available stock assessment resources. Species that are long-lived and slow growing, with a relatively direct stock recruitment relationship, and for which economic value of their fisheries is relatively low, like coastal sharks (Peterson et al. 2022a), may pose suitable for reduced assessment frequency.

Associated with assessment frequency, lags between data collection and availability for stock assessment, as well as lags between the completion of a stock assessment and the implementation of management have been shown to be problematic (Shertzer and Prager 2007). More fully understanding the management impacts of these time lags and how these lags affect MP behavior may serve to weed out non-robust MPs and even further motivate reduction in these time lags in the future.

Following implementation of a new MP, it is important to continue to monitor the fishery and the performance of the MP to ensure that fishery behavior is consistent with what was expected (Holland 2010). Developing rules regarding when fishery behavior falls outside of the simulation-tested scenarios or expected behavior should trigger additional analyses that more fully encapsulate the unexpected environmental changes or ignored sources of uncertainty within the system is still relatively new (Carruthers and Hordyk 2019). Additional guidance on monitoring MPs post-implementation should be developed.

Actions:

- South Atlantic interim assessment working group to explore utilization of interim approaches for South Atlantic species (membership: Klibansky (lead), Williams, Shertzer, Vincent, Cheshire, Calay, Peterson)

- Effect of stock assessment frequency on sandbar shark (Peterson et al. 2022a)

4. Explore Management Procedure Performance Across Climate Change and Nonstationarity

Specific goals:

6.1 Consider Climate Change / Ecosystem Complexity

6.1.1 Ecosystem complexity (episodic events, complex space use, storm events, regime shifts, ecosystem-level productivity)

6.1.2 MP performance across non-static projections

6.1.3 Merge species-specific climate projections into MP projections (e.g., shifting distributions, shifting allocations)

6.2. Merge with Climate Fisheries Initiative (<https://www.fisheries.noaa.gov/topic/climate-change>)

It is readily apparent that climate change and nonstationarity are currently impacting fish stocks (Morley et al. 2018), and management will need to adapt accordingly. Where mechanistic drivers of climate change can be linked to fish stocks (e.g., species distribution modeling, environmental drivers of stock productivity, increased storm or episodic events, climatic decadal forcings, ecological tipping points / hysteresis) or fishing behavior (e.g., shifts in species targeting, increased distance traveled to fish/increased fishing expenditures, locally emerging fisheries and allocation changes), these considerations can be implemented in an operating model. Accordingly, MPs can be tested across these dynamic future projections.

For example, climate change has the potential to increase storm events which could lead to episodic mortality in affected stocks (e.g., consider red tide-induced mortality events in red grouper). MP performance could be tested across OM projections that include sporadic episodic mortality events. Species distribution modeling has been used to project future habitat availability. By scaling projected fishing and survey availability (e.g., catchability) according to projected habitat availability, the impacts of shifting distributions can be accounted for within spatially explicit OM projections. Similarly, if climate change is mechanistically linked to stock productivity through altered recruitment success or habitat degradation, this too could be explicitly modeled in an OM. These nonstationary OMs could be used to test the effectiveness of current or proposed management paradigms. MP performance across a climate-sensitive OM should be compared to a stationary OM to consider the potential scope of error of assuming stationary future projections within an MSE.

The emerging capacity provided by the Climate Fisheries Initiative will allow for more informative quantitative information on climate impact on fishery resources to be considered in assessment and management applications. We envision MSE providing the critical testing ground to develop robust management procedures in the face of rapid climate change (Karp et al. 2019).

Actions:

- Exploring the impact of red tide on red grouper management performance using SSMSE (Vaughan and Sagarese et al.)
- Testing management procedures for climate-ready fisheries management in the southeast U.S. Atlantic (Peterson, Klibansky, et al.)

5. Consider Broader Ecosystem Impacts of Fisheries Management

Specific goals:

- 5.1 Identify optimal yield (OY)
- 5.2 Explicitly consider and model human behavior (technical interactions, fisher behavior, shifting species targeting, etc.)
- 5.3 Build-in economics (social performance metrics to address human/social management objectives)
- 5.4 Incorporating local ecological knowledge (LEK) / traditional ecological knowledge (TEK) into management procedures and stock assessments
- 5.5 Single species MP performance in multispecies / ecosystem context
- 5.6 Multi-species / ecosystem-based HCRs
- 5.7 Multi-species / ecosystem-based BRPs

Single-species stock assessment and management inherently assume that other factors that could influence biological reference points and management targets are static. However, it is readily apparent that the ecosystem around a stock is never constant and that ecosystem dynamics may influence realized maximum yield (e.g., forage species), which calls single-species assessment and management practices into question (e.g., Pauly and Froese 2021). Accordingly, a focus on ecosystem-based fisheries management (EBFM) has been highlighted in the next generation stock assessment enterprise to more formally consider climate change and nonstationarity, multispecies fisheries and interactions, environmental and ecosystem drivers, and socioeconomics (including human behavior; Lynch et al. 2018).

With progress in ecosystem modeling and advances in EBFM, it is correspondingly important to develop management procedures that explicitly incorporate ecosystem considerations. This includes both testing single-species MPs in a multispecies or broader ecosystem context and generating multi-species or ecosystem-based HCRs and biological reference points (BRPs). Ecosystem MPs may consider environmental drivers on productivity, multispecies interactions (e.g., predation -- leave a fraction of forage fishes ‘for the birds’; menhaden, Chagaris et al. 2020; competition; etc.), technical fishery interactions (including discard mortality and depredation; Punt et al. 2005; Dichmont et al. 2008; Ono et al. 2018), and fisher behavior (e.g., shifting species targeting, high-grading, learning, gear modifications, etc.; Hilborn and Walters 1992; Wilberg et al. 2010; Ono et al. 2018).

Further, consideration of ecosystem and socioeconomic performance metrics have rarely been explicitly incorporated into an MSE (Hutniczak et al. 2019). Social studies analyzing drivers of angler satisfaction and utility are particularly relevant within the recreational sector (e.g., MAFMC summer flounder MSE, <https://www.mafmc.org/actions/summer-flounder-mse>; Goldsmith et al. 2018).

Local or traditional ecological knowledge (LEK/TEK) represents the generational knowledge accumulated by local fishers or traditional ecosystem inhabitants. LEK has often been reinforced by scientific investigations and is increasingly being recognized as a valuable source of information (dolphin/wahoo stakeholder workshops; McPherson et al. 2022; Blake et al. 2022). Incorporation of LEK in the management process poses an area of further study that could lead to an overall improved management process and foster improved fisher buy-in to the management process (SocioEconomic Aspects in Stock Assessments Workshop, SEASAW; Chan et al. 2022).

Stakeholder and ecosystem input are key aspects to fully understanding, defining, and operationalizing fishery management objectives. Selecting the ideal compromise between competing objectives (‘maximizing net happiness’) requires full characterization of the management trade-offs associated with alternate management actions and iterative engagement with stakeholders and managers. This full incorporation of ecosystem dynamics is critical to defining and managing for optimum yield (OY), as specified by the Magnuson-Stevens Fishery Conservation and Management Act. OY is defined as the yield which provides the greatest benefit to the nation, with explicit consideration of economic, ecological, and social factors (NS1 Guidelines). Rather than being a quantity that can be explicitly solved for within a model, OY will emerge as a function and relative weighting of stock-specific operational management objectives. Fishery management objectives reflect the stakeholder-defined goals and priorities of the fishery, potentially including environmental, ecological, and socioeconomic considerations and perspectives from other disenfranchised interest groups.

Actions:

- Bycatch and technical interactions will be explored in Kemp’s Ridley sea turtle MSE
- Local ecological knowledge collected from stakeholder participatory workshops (Karnauskas & McPherson et al.)
- ICCAT-led bluefin tuna MSE is a multi-stock, multi-area simulation
- SAFMC-led MSE on South Atlantic snapper/grouper complex
- Chasing OY defined as a Gulf of Mexico Fishery Ecosystem Issue (FEI)

6. Focus on Recreationally Dominated Fisheries and Non-constant Allocation

Specific goals:

7.1 Magnitude of total F/removals given uncertain data

7.2 Candidate MPs and MP performance for recreationally-dominated fisheries

7.3 Define recreational fishery management objectives

7.4 Allocation impacts

7.4.1 Can we define an optimal allocation scheme between recreational, commercial, other fisheries?

7.4.2 How effective is allocation advice -- can we utilize it?

Recreationally dominated fisheries are particularly challenging to manage, because recreational fishing activities are notoriously difficult to regulate and monitor. The Southeast is uniquely challenged by a collection of fisheries for which the recreational sector dominates (Shertzer et al. 2019). Recreational removals are particularly uncertain and challenging to estimate, and management measures designed for commercial fisheries may not be applicable to recreational fisheries or suit their unique management objectives (e.g., Goldsmith et al. 2018). Not only are recreational removals difficult to tabulate, but fishery objectives vary significantly across sectors or regions.

Management procedures have rarely been generated for recreationally-focused fisheries (Ahrens et al. 2020; Cao et al. MARFIN project), and additional research should be conducted to address this information gap, focusing on less traditional management measures (e.g., slot/size restrictions, bag/trip limits, closed areas, fixed seasons, etc.) that may be more effective for regulating recreational effort. Uncertainties in recreationally-focused fishery MSEs should reflect the uncertainties inherent in estimated recreational removals (and consider the impact of changing MRIP protocols), altered management goals, economic structure, and fisher behaviors.

Along with uncertainty in total fishing pressure attributed to the recreational sector, comes uncertainty in sector allocation. MPs that address alternate or changing allocations could be a fruitful area of research. This further begs the question of whether fisheries managers can manage for an ‘optimal’ allocation scheme. Is allocation advice able to be controlled or utilized within a management context? This question may be particularly relevant as the recreational sector has grown substantially in recent years and catchability is continuing to improve with advancements in technology and social media communication.

Actions:

- MARFIN (NA19NMF4330236) Development and application of a management strategy evaluation tool: tradeoffs between the management objectives of recreational and commercial fisheries. Jie Cao, Matt Damiano, Kyle Shertzer
- Nathan Vaughan’s Decision Support Tool Shiny application
- SAFMC-funded South Atlantic snapper/grouper MSE

7. “Right-weight” Assessment Complexity

Specific goals:

- 4.1 Optimize MP / EM complexity with respect to OM complexity
 - 4.1.1 Consider trade-offs between [management performance, assessment accuracy and precision] vs. [assessment cost, data requirements, time requirements]
 - 4.1.2 Consider EM/MP complexity, including consideration of the HCR, EM/assessment model [explicitly modeling space-use, time-varying parameter estimates, state-space modeling, regime shifts, treatment and incorporation of additional data sources, etc.], data quality/quantity, implementation model
 - 4.1.3 Consider OM complexity: MP performance across episodic events, space, regime shifts, recruitment/large cohorts, nonstationarity
- 4.2 Explore empirical MPs

Significant energy is invested in advancing the methodology and computational complexity of stock assessments. While many applications likely require complex assessment configurations, there are likely species for which a simple stock assessment approach would produce equivalent management performance at a much faster and cheaper rate. A thorough exploration of the value of added EM complexity, including spatial dynamics, time-varying parameters, state-space modeling approaches, inclusion and treatment of additional or nontraditional sources of data, modeling environmental linkages, and more, would address this hypothesis. Notably, the value added will likely correspond to the dynamics of each stock, such that this also includes consideration of how MPs perform across a range of OM complexities that are not typically addressed in MSE simulations. These OM complexities may include climate change, susceptibility to climatic oscillations or episodic events, space use patterns, interactions with the environment or other species, human-driven fishery dynamics, and fishery reliance on large cohort dynamics.

Consideration of MP complexity also includes full consideration of empirical MPs. Empirical (or indicator-based) MPs rely on an indicator of stock status (typically index of abundance) to adjust total allowable catch (TAC) advice from year-to-year. Because empirical MPs do not require a full stock assessment, which is a particularly time-consuming process, they can be used to quickly provide management advice, potentially even within the same year. As such, empirical MPs are not necessarily subjected to the same data - assessment - management delay as conventional stock assessments, which could serve to improve potential negative outcomes associated with such delays (Shertzer and Prager 2007; see Section 8 for more on empirical MPs).

Actions:

- Stock assessment complexity for short-lived species explicitly explored within Flagship Gulf of Mexico shrimp MSE
- Empirical MPs explored for Gulf of Mexico shrimp, dolphinfish, and bluefin tuna

8. Prioritize data availability / quality / efficiency

Specific goals:

- 3.1 Prioritize data collection systems
 - 3.1.1 Identify essential surveys
- 3.2 Optimize sampling and design
 - 3.2.1 Identify requisite / optimal sample sizes

A benefit of the MSE process is that it highlights future research priorities (Butterworth and Punt 1999; De Oliveira et al. 2008), including identification of the most important / useful sources of data and which data streams contribute less to the successful management of the resource. Considering the high expense of data collection programs, understanding the relative benefit of increasing / decreasing survey frequency, survey spatial coverage, and effective sample sizes of age and length compositions will help to optimize data generating protocols.

Additional considerations include identifying the minimum length of an index of relative abundance required for the index to be included in a stock assessment, the impact of improved data quality over time, and the added value that tagging programs (including close-kin mark-recapture) would add to the management of a stock. While these questions could be addressed in a full or desk MSE, a risk analysis or non-feedback simulation approach may also be a less resource-intensive method of answering these questions (e.g., Siegfried et al. 2016).

Actions:

- Proposed desk MSE to explore data quantity/quality for the South Atlantic using openMSE framework; though no specific action items to date

9. Contribute to Externally-Sponsored MSEs

Specific goals:

- 10.1 Collaborate with appropriate Councils and RFMOs (e.g., ICCAT) to conduct MSEs relevant to the Southeast US region
- 10.2 Identify external MSE activities of interest, and collaborate with lead scientists to maximize utilization of these MSE activities.

We note that there are ongoing MSEs at the International Commission for the Conservation of Atlantic Tunas (ICCAT) for North Atlantic Swordfish, Atlantic Bluefin tuna, tropical tunas and a completed MSE for North Atlantic Albacore. While SEFSC staff are closely involved in each of these, we do not list these as higher MSE priorities for the SEFSC as they are already in progress and led by ICCAT. Similarly, there are a number of ongoing MSEs by our research partners that we have not listed. Instead we have focused on the MSEs where SEFSC is likely to take on a lead

role. Where appropriate, the SEFSC should identify, participate in, and contribute to regional MSE activities organized through RFMOs or by external partners.

Actions:

- South Atlantic Council snapper/grouper MSE (<https://safmc.net/science-sedar/snapper-grouper-management-strategy-evaluation/>)
- ICCAT MSEs
 - Atlantic bluefin tuna
 - Northern swordfish
 - Tropical tunas

10. Build / Automate MSE Tools and Packages

Specific goals:

9.1 SSMSE (development and familiarization)

9.2 DLMtool & MSE tool (familiarization)

9.3 Develop BAM MSE package (fully consider the resource investment in anticipation of upcoming stock assessment framework replacement: Fisheries Integrated Modeling System, FIMS)

Many tools and packages exist for performing MSEs, including:

- openMSE (containing DLMtool, MSEtool, and SAMtool), <https://openmse.com/>;
- SSMSE, <https://github.com/nmfs-fish-tools/SSMSE>;
- rPath for use with Ecopath with Ecosim, Lucey et al. manuscript submitted to Fisheries Research; <https://github.com/NOAA-EDAB>;
- Closed-loop, MSE routine in Atlantis ecosystem modeling software, a pre-built, internal model routine (<https://www.cmar.csiro.au/research/mse/atlantis.htm>);
 - Note a Gulf of Mexico Atlantis model has been developed and was used to assess multispecies HCR (Masi et al. 2018);
- WHAM, a recoding of ASAP in R & TMB w/ random effects, is available as an R package (<https://timjmiller.github.io/wham/>) and associated MSE capabilities are in development;
- FLR – Kell et al. 2007, <https://flr-project.org/>;
- mseR – Cox et al., <https://github.com/mseR-code/mseR-base>;
- GMSE – Duthie et al., <https://github.com/bradduthie/gmse>;
- POPSIM - NMFS toolbox (e.g., Schirripa 2016)

Some level of familiarization with these tools would help to understand which tool is most appropriate to answer each research question and the corresponding benefits and limitations of each approach. Though pre-built tools may be limited for many real-world scenarios, the value of user-friendly packages make MSE research more accessible to a wider pool of researchers. Investment in building additional tools should carefully consider the benefits versus the costs. For

example, will building a BAM MSE framework be worth the requisite resources when the Fisheries Integrated Modeling System (FIMS) is scheduled to be operational in the near future with the goal of replacing all regional assessment modeling frameworks?

Actions:

- SSMSE (Doering and Vaughan et al.)
- Forecasting best practices working group (Lead: Vaughan & Siegfried)
- OpenMSE operating models built for South Atlantic managed fishes (Klibansky)

11. Desk MSEs to Improve Understanding of Population Dynamics, Stock Assessment, and Management Processes

Specific goals:

10.1 Desk MSEs to advance understanding / acceptance of MPs and the assessment process as relevant for the SEFSC

10.2 Species-specific or species complex-specific MSEs for implementation (primarily for controversial species)

10.3 To address other relevant conceptual questions; examples include:

10.3.1 Assess likelihood of MP utilization -- are there some MPs that are unlikely to be implemented in practice

10.3.2 Explore mechanisms to provide status determination along with TAC advice from empirical MPs

10.3.3 Improve and explore generic MP performance

10.3.4 Improve stock assessment processes

Additional goals include performing desk MSEs to advance our understanding and buy-in of MP performance, stock assessment, and fishery population dynamics. Desk MSEs can be exploratory in nature or be performed when the goal of the simulation is to adapt an MP where management objectives and stock and fishery uncertainties are already fully identified (see guidance on when to include stakeholders by Walter et al. *in prep*). These desk MSEs may also serve to ask practical questions, including improving the assessment process (e.g., Irwin et al. 2008; Carruthers et al. 2018; Harford et al. 2019), evaluating inclusion of environmental factors in assessments (Harford et al. 2018; Haltuch et al. 2019), and developing modeling capacity and tools for MSEs with a scope beyond single species management (Kaplan et al. 2021). For example, an application of MSE to the sandbar shark highlighted the significant impact that unmanaged, international exploitation may have on the management of US species (Peterson et al. 2022b). Future extensions of desk MSEs within the SEFSC may focus on how empirical MPs can be modified to provide requisite status determination for managers, which management approaches

would be more likely to be implemented in practice, providing additional guidance on identifying exceptional circumstances, or improving the stock assessment process.

Actions:

- Small-scale desk MSE to beta test SSMSE
- Exploratory conceptual MSE questions to be addressed within the National MSE WG (e.g., Walter et al. *in RPTS review*)
- ICCAT MSEs (Northern Swordfish, Atlantic Bluefin Tuna, Tropical Tunas)
- Sandbar shark MSE (Peterson et al. 2022b)

Summary

We further note that many of the priorities are interrelated. Inclusion of ecosystem dynamics may impact ‘right weighting’ assessment complexity dynamics, and limited data availability will limit our ability to realistically explore many complex questions related to human behavior, climate change, ecosystem dynamics, or multi-sector exploitation. We further emphasize the technical challenges inherent in many of these areas of exploration. For example, investigation into ecosystem-based fisheries management requires development of full ecosystem OMs.

The ability to leverage already existing resources will be imperative to advance MSE within the Southeast. This includes building on pre-existing research, like Masi et al.’s (2018) Atlantis model of the Gulf of Mexico and pre-packaged MSE software (e.g., SSMSE; Doering and Vaughan 2023; openMSE; Hordyk et al. 2022), and ensuring new project initiatives are not duplicative of existing efforts. Lastly, we highlight that this research necessitates the collaboration of many interdisciplinary partners.

References

- Ahrens RNM. Allen MS. Walters C. Arlinghaus R. (2020) Saving large fish through harvest slots outperforms the classical minimum-length limit when the aim is to achieve multiple harvest and catch-related fisheries objectives. *Fish and Fisheries*. 21: 483-510.
- Berkson J. Thorston JT. (2015) The determination of data poor catch limits in the United States: is there a better way? *ICES Journal of Marine Science*. 72(1):237-242.
- Blake SD. McPherson M. Karnauskas M. Sagarese SR. Rios A. Stoltz AD. Mastitski A. Jepson M. Use of fishermen’s local ecological knowledge to understand historic red tide severity patterns. *Marine Policy*. 145: 105253.
- Blamey LK. Plagány EE. Hutton T. Deng RA. Upston J. Jarrett A. (2022) Redesigning harvest strategies for sustainable fishery management in the face of extreme environmental variability. *Conservation Biology*. 36(3): e13864.
- Butterworth DS. Punt AE. (1999) Experiences in the evaluation and implementation of management procedures. *ICES Journal of Marine Science*. 56: 985-998.

- Carruthers T. Butterworth D. (2018) ABT-MSE: an R package for Atlantic bluefin tuna management strategy evaluation. ICCAT Collective Volume of Scientific Papers. 74: 3553-3559.
- Carruthers TR. Hordyk A. (2018) The Data-Limited Methods Toolkit (DLMtool): An R package for informing management of data-limited populations. *Methods Ecol Evol.* 2018: 1–8.
- Carruthers TR. Hordyk AR. (2019) Using management strategy evaluation to establish indicators of changing fisheries. *Canadian Journal of Fisheries and Aquatic Sciences.* 76: 1653-1668.
- Carruthers TR. Kell LT. Butterworth DS. Maunder MN. Geromont HF. Walters C. McAllister MK. Hillary R. Levontin P. Kitakado T. Davies CR. 2016. Performance review of simple management procedures. *ICES Journal of Marine Science*, 73(2): 464-482.
- Carruthers TR. Punt AE. Walters CJ. MacCall A. McAllister MK. Dick EJ. Cope J. (2014) Evaluating methods for setting catch limits in data-limited fisheries. *Fisheries Research.* 153: 48-68.
- Chagaris D. Drew K. Schueller A. Cieri M. Brito J. Buchheister A. (2020) Ecological reference points for Atlantic menhaden established using an ecosystem model of intermediate complexity. *Frontiers in Marine Science.* 7: 606417.
- Chan, A. N., A. C. Haynie, P. Lynch, S. Sagarese, K. Shotwell, L. Pfeiffer, S. Crosson, M. Krigbaum, D. Lipton, J. Vieser, A. Mamula, J. Walter, R. Methot, K. Blackhart, M. Szymkowiak, E. Markowitz, S. Oakes, M. Downs, H. Townsend, T. T. Jones, D. Stram, and M. McPherson. 2022. The SocioEconomic Aspects in Stock Assessments Workshop (SEASAW) Report: Recommendations for Increasing Assessment Accuracy and Improving Management Advice. U.S. Department of Commerce, NOAA. NOAA Tech. Memo. NMFS-F/SPO-232, 96 p.
- De Oliveira JAA. Kell LT. Punt AE. Roel BZ. Butterworth DS. 2008. Managing without best predictions: the Management Strategy Evaluation framework. 104-134. In: Payne A. Cotter J. Potter T (eds.) *Advances in Fisheries Science 50 years on from Beverton and Holt*. Blackwell Publishing, Oxford, UK.
- de Moor CL. Butterworth DS. De Oliveira JAA. (2011) Is the management procedure approach equipped to handle short-lived pelagic species with their boom and bust dynamics? The case of the South African fishery for sardine and anchovy. *ICES Journal of Marine Science.* 68(10): 2075–2085
- Deroba JJ. Bence JR. (2008) A review of harvest policies: understanding relative performance of control rules. *Fisheries Research.* 94: 210-223.
- Deroba JJ. Gaichas SK. Lee M-Y. Feeney RG. Boelke D. Irwin BJ. (2019) The dream and the reality: meeting decision-making time frames while incorporating ecosystem and economic models into management strategy evaluation. *Canadian Journal of Fisheries and Aquatic Sciences.* 76: 1112-1133.
- Dichmont CM. Deng A. Punt AE. Ellis N. Venables WN. Kompas T. Ye Y. Zhou S. Bishop J. (2008) Beyond biological performance measures in management strategy evaluation: brining in economics and the effects of trawling on the benthos. *Fisheries Research.* 238-250.

- Doering K. Vaughan N. (2023) Management Strategy Evaluation for SS (SMSE). <https://nmfs-fish-tools.github.io/SSMSE/>.
- Dowling NA. Smith DC. Knuckey I. Smith ADM. Domaschewicz P. Patterson HM. Whitelaw W. (2008) Developing harvest strategies for low-value and data-poor fisheries: case studies from three Australian fisheries. *Fisheries Research*. 94: 380-390.
- Fay G. Tuck GN. *Eds.* (2011) Development of a multi-gear spatially explicit assessment and management strategy evaluation for the Macquarie Island Patagonian toothfish fishery. Australian Fisheries Management Authority and CSIRO marine and Atmospheric Research, Wealth from Oceans Flagship, Hobart. 178pp.
- Feeney RG. Boelke DV. Deroba JJ. Gaichas S. Irwin BJ. Lee M. (2019) Integrating management strategy evaluation into fisheries management: advancing best practices for stakeholder inclusion based on an MSE for Northeast US Atlantic herring. *Canadian Journal of Fisheries and Aquatic Sciences*. 76: 1103-1111.
- Francis RICC. Shotton R. (1997) "Risk" in fisheries management: a review. *Canadian Journal of Fisheries and Aquatic Science*. 54: 1699-1715.
- Goethel DR. Lucey SM. Berger AM. Gaichas SK. Karp MA. Lynch PD. Walter, III JF. (2019b) Recent advances in management strategy evaluation: introduction to the special issue "Under pressure: addressing fisheries challenges with Management Strategy Evaluation." *Can J Fish Aquat Sci*. 76(10): 1689-1696.
- Goethel DR. Lucey SM. Berger AM. Gaichas SK. Karp MA. Lynch PD. Walter III JF. Deroba JJ. Miller S. Wilberg MJ. (2019a) Closing the feedback loop: on stakeholder participation in management strategy evaluation. *Canadian Journal of Fisheries and Aquatic Sciences*. 76(10): 1895-1913.
- Goldsmith WM. Scheld AM. Graves JE. (2018) Characterizing the preferences and values of U.S. recreational Atlantic bluefin tuna anglers. *North American Journal of Fisheries Management*. 38: 680-697.
- Grüss A. Harford WJ. Schirripa MJ. Velez L. Sagarese SR. Shin YJ. Verley P. (2016) Management strategy evaluation using the individual-based multispecies modeling approach OSMOSE. *Ecological Modelling* 340: 86-105.
- Haltuch MA. Brooks EN. Brodziak J. Devine JA. Johnson KF. Klibansky N. Nash RDM. Payne MR. Shertzer KW. Subbey S. Wells BK. (2019) Unraveling the recruitment problem: A review of environmentally-informed forecasting and management strategy evaluation. *Fisheries Research*. 217: 198-216.
- Harford WJ. Gedamke T. Babcock EA. Carcamo R. McDonald G. Wilson JR. (2016) Management strategy evaluation of a multi-indicator adaptive framework for data-limited fisheries management. *Bulletin of Marine Science*. 92(4): 423-445.
- Harford WJ. Grüss A. Schirripa MJ. Sagarese SR. Bryan M. Karnauskas M. (2018) Handle with care: establishing catch limits for fish stocks experiencing episodic natural mortality events. *Fisheries*. 43(10): 463-471.

- Harford WJ. Sagarese SR. Karnauskas M. (2019) Coping with information gaps in stock productivity for rebuilding and achieving maximum sustainable yield for grouper-snapper fisheries. *Fish and Fisheries*. 20: 303-321.
- Harlyan LI. Wu D. Kinashi R. Kaewnern M. Matsuishi T. (in press) Validation of a feedback harvest control rule in data-limited conditions for managing multispecies fisheries. *Canadian Journal of Fisheries and Aquatic Sciences*.
- Hilborn E. Walters CJ. (1992) Quantitative fisheries stock assessment: choice, dynamics and uncertainty. Chapman and Hall, New York. 570 pp.
- Holland DS. (2010) Management strategy evaluation and management procedures: tools for rebuilding and sustaining fisheries. OECD Food, Agriculture and Fisheries Working Papers. 25. OECD Publishing. 55 p.
- Hordyk A. Huynh Q. Carruthers T. (2022). openMSE: Easily Install and Load the 'openMSE' Packages. <https://openmse.com/>, <https://github.com/Blue-Matter/openMSE>.
- Huynh QC. Hordyk AR. Forrest RE. Porch CE. Anderson SC. Carruthers TR. (in press) The interim management procedure approach for assessed stocks: responsive management advice and lower assessment frequency. *Fish and Fisheries*.
- Hutniczak B. Lipton D. Wiedenmann J. Wilberg M. (2019) Valuing changes in frequency of fish stock assessments. *Canadian Journal of Fisheries and Aquatic Sciences*. 76(9) 1640-1652.
- Irwin BJ. Wilberg MJ. Bence JR. Jones ML. (2008) Evaluating alternative harvest policies for yellow perch in southern Lake Michigan. *Fisheries Research*. 94: 267-281.
- Karp MA. Peterson JO. Lynch PD. Griffis RB. Adams CF. Arnold WS. Barnett LAK. deReynier Y. DiCosimo J. Fenske KH. Gaichas SK. Hollowed A. Holsman K. Karnauskas M. Kobayashi D. Leising A. Manderson JP. McClure M. Morrison WE. Schnettler E. Thompson A. Thorson JT. Walter III JF. Yau AJ. Methot RD. Link JS. (2019) Accounting for shifting distributions and changing productivity in the development of scientific advice for fishery management. *ICES Journal of Marine Science*. doi:10.1093/icesjms/fsz048
- Kell LT. Mosqueira I. Grosjean P. Fromentin JM. Garcia D. Hillary R. Jardim E. Mardle S. Pastoors MA. Poos JJ. Scott F. Scott RD. (2007) FLR: an open-source framework for the evaluation and development of management strategies.
- Kvamsdal SF. Eide A. Ekerhovd N. Enberg K. Gudmundsdottir A. Hoel AH. Mills KE. Mueter FJ. Ravn-Jonsen L. Sandal LK. Stiansen JE. Vestergaard N. (2016) Harvest control rules in modern fisheries management. *Elementa: Science of the Anthropocene*. 4: 000114.
- Li Y. Bence JR. Brenden TO. (2016) The influence of stock assessment frequency on the achievement of fishery management objectives. *North American Journal of Fisheries Management*. 36: 793-812.
- MacCall AD. (2009) Depletion-corrected average catch: a simple formula for estimating sustainable yields in data-poor situations. *ICES Journal of Marine Science*, 66: 2267-2271.
- Mapstone BD. Little LR. Punt AE. Davies CR. Smith ADM. Pantus F. McDonald AD. Williams AJ. Jones J. (2008) Management strategy evaluation for line fishing in the Great Barrier Reef: Balancing conservation and multi-sector fishery objectives. *Fisheries Research*. 94: 315-329.

- Masi MD. Ainsworth CH. Kaplan IC. Schirripa MJ. (2018). Interspecific interactions may influence reef fish management strategies in the Gulf of Mexico. *Marine and Coastal Fisheries: Dynamics, Management, and Ecosystem Science*: 10: 24-39.
- McPherson, Matthew, Mandy Karnauskas, Julia Byrd, John Hadley, Skyler Sagarese, Cassidy Peterson, Kevin Craig, Anthony Mastitski, Scott Crosson. 2022. Participatory modeling of dolphin and wahoo fisheries in the U.S. South Atlantic: Final report from a workshop series. NOAA Technical Memorandum NMFS-SEFSC-755, 14 p. <https://doi.org/10.25923/7eg6-9856>
- Miller SK. Anganuzzi A. Butterworth DS. Davies CR. Donovan GP. Nickson A. Rademeyer RA. Restrepo V. (2019) Improving communication: the key to more effective MSE processes. *Canadian Journal of Fisheries and Aquatic Science* 76: 643-656.
- Morley JW, Selden RL, Latour RJ, Frölicher TL, Seagraves RJ, Pinsky ML (2018) Projecting shifts in thermal habitat for 686 species on the North American continental shelf. *PLoS ONE* 13(5): e0196127. <https://doi.org/10.1371/journal.pone.0196127>
- Munch SB. Brias A. Sugihara G. Rogers TL. (2020). Frequently asked questions about nonlinear dynamics and empirical dynamic modelling. *ICES Journal of Marine Science*. 77(4): 1463-1479.
- Munch SB. Giron-Nava A. Sugihara G. (2018) Nonlinear dynamics and noise in fisheries recruitment: a global meta-analysis. *Fish and Fisheries*. 19: 964-973.
- Nesslage GM. Leaf RT. Wilberg MJ. Mroch III RM. Schueller AM. (2020) A simulation-based evaluation of commercial port sampling programs for the Gulf and Atlantic Menhaden fisheries. *North American Journal of Fisheries Management*. DOI: 10.1002/nafm.10459
- NMFS (2016) National Bycatch Reduction Strategy. U.S. Department of Commerce. 17 pp. <https://repository.library.noaa.gov/view/noaa/17062>
- NPFMC (2019) Stock assessment and fishery evaluation report for the groundfish resources of the Gulf of Alaska. North Pacific Fishery Management Council. Anchorage, AK.
- Ono K. Haynie AC. Hollowed AB. Ianelli JN. McGilliard CR. Punt AE. (2018) Management strategy analysis for multispecies fisheries, including technical interactions and human behavior in modelling management decisions and fishing. *Canadian Journal of Fisheries and Aquatic Sciences*. 75: 1185-1202.
- Pauly D. Froese R. (2021) MSY needs no epitaph--but it was abused. *ICES Journal of Marine Science*. 78(6): 2204-2210.
- Peterson CD. Wilberg MJ. Cortés E. Courtney DL. Latour RJ. (2022a) Effects of altered stock assessment frequency on the management of a large coastal shark. *Marine and Coastal Fisheries*. 15(9): e10221.
- Peterson CD. Wilberg MJ. Cortés E. Courtney DL. Latour RJ. (2022b) Effects of unregulated international fishing on recovery potential of the sandbar shark within the southeast United States. *Canadian Journal of Fisheries and Aquatic Sciences*. 79(9): 1497-1513.
- Punt AE. (2010) Harvest control rules and fisheries management. In: *Handbook of Marine Fisheries Conservation and Management*. Grafton RQ. Hilborn R. Squires D. Tait M. Williams MJ. (eds.). Oxford University Press, Inc. New York, NY. pp 582-594.

- Punt AE. Butterworth DS. de Moor CL. De Oliveira JAA. Haddon M. (2016) Management strategy evaluation: best practices. *Fish and Fisheries*. 17: 303-334.
- Punt AE. Donovan GP. (2007) Developing management procedures that are robust to uncertainty: lessons from the International Whaling Commission. *ICES Journal of Marine Science*, 64: 603–612.
- Punt AE. Pribac F. Taylor BL. Walker TI. (2005) Harvest strategy evaluation for school and gummy shark. *J. Northw. Atl. Fish. Sci.* 35: 387-406.
- Punt AE. Siple M. Francis TB. Hammond PS. Heinemann D. Long KJ. Moore JE. Sepúlveda M. Reeves RR. Sigurðsson GM. Víkingsson G. Wade PR. Williams R. Zerbini AN. (2020) Robustness of potential biological removal to monitoring, environmental, and management uncertainties. *ICES Journal of Marine Science*. 77(7-8): 2491-2507.
- Rademeyer RA. Plagányi EE. Butterworth DS. (2007) Tips and tricks in designing management procedures. *ICES Journal of Marine Science*. 64: 618-625.
- Sagarese SR. Harford WJ. Walter JF. Bryan MD. Isley JJ. Smith MW. Goethel DR. Rios AB. Cass-Calay SL. Porch CE. Carruthers TR. Cummings NJ. (2019) Lessons learned from data-limited evaluations of data-rich reef fish species in the Gulf of Mexico: implications for providing fisheries management advice for data-poor stocks. *Canadian Journal of Fisheries and Aquatic Sciences*. 76: 1624-1639.
- Sagarese SR. Rios AB. Cass-Calay SL. Cummings NJ. Bryan MD. Stevens MH. Harford, WJ. McCarthy KJ. and Matter VM. (2018) Working towards a framework for stock evaluations in data-limited fisheries. *North American Journal of Fisheries Management*, 38(3): 507-537.
- Sainsbury KJ. Punt AE. Smith ADM. (2000) Design of operational management strategies for achieving fishery ecosystem objectives. *ICES Journal of Marine Science*. 57: 731-741.
- Sánchez-Maróño S, Uriarte A, Ibaibarriaga L, Citores L. (2021) Adapting simple index-based catch rules for data-limited stocks to short-lived fish stocks' characteristics. *Frontiers in Marine Science*. 8: 662942.
- Schirripa MJ. (2016) Building a management strategy evaluation for northern swordfish: part 1. *Collective Volume of Scientific Papers ICCAT*. 72(8): 2031-2041.
- SEDAR (Southeast Data Assessment and Review). 2016. SEDAR46: U.S. Caribbean data-limited species. SEDAR, North Charleston, SC. 373 pp.
- SEDAR (Southeast Data Assessment and Review). 2016. SEDAR49: Gulf of Mexico data-limited species. SEDAR, North Charleston, SC. 618 pp.
- Siegfried KI. Williams EH. Shertzer KW. Coggins LG. (2016) Improving stock assessments through data prioritization. *Canadian Journal of Fisheries and Aquatic Sciences*. 73: 1703-1711.
- Shertzer KW. Prager MH. (2007) Delay in fishery management: diminished yield, longer rebuilding, and increased probability of stock collapse. *ICES Journal of Marine Science* 64:149-159.

- Shertzer KW. Williams EH. Craig JK. Fitzpatrick EE. Klibansky N. Siegfried KI. (2019) Recreational sector is the dominant source of fishing mortality for oceanic fishes in the Southeast United States Atlantic Ocean. *Fisheries Management and Ecology*. 26: 621-629
- Smith ADM. Smith DC. Tuck GN. Klaer N. Punt AE. Knuckey I. Prince J. Morison A. Kloser R. Haddon M. Wayte S. Day J. Fay G. Pribac F. Fuller M. Taylor B. Little LR. (2008) Experience in implementing harvest strategies in south-eastern fisheries. *Fisheries Research*. 94: 373-379.
- Thorpe RB. De Oliveira JAA. (2019) Comparing conceptual frameworks for a fish community MSY (FCMSY) using management strategy evaluation—an example from the North Sea. *ICES Journal of Marine Science*. 76(4): 813-823.
- Tsai C-H. Munch SB. Masi MD. Pollack AG. (2022) Predicting nonlinear dynamics of short-lived penaeid shrimp species in the Gulf of Mexico. *Canadian Journal of Fisheries and Aquatic Sciences*. 80(1): 57-68.
- Van Beveren E. Duplisea DE. Marentette JR. Smith A. Castonguay M. (2020) An example of how catch uncertainty hinders effective stock management and rebuilding. *Fisheries Research*. 224: 105473.
- Wade PR. (1998) Calculating limits to the allowable human-caused mortality of cetaceans and pinnipeds. *Marine Mammal Science*, 14: 1–37.
- Walter, III JF. Peterson CD. Marshall K. Deroba JJ. Gaichas S. Williams BC. Stohs S. Tommasi D. Ahrens R. (*in press*) When to conduct, and when not to conduct, management strategy evaluations. *ICES Journal of Marine Science*.
- Wilberg MJ. Irwin BJ. Jones ML. Bence JR. (2008) Effects of source-sink dynamics on harvest policy performance for yellow perch in southern Lake Michigan. *Fisheries Research*. 94: 282-289.
- Wilberg MJ. Thorson JT. Linton BC. Berkson J. (2010) Incorporating time-varying catchability into population dynamic stock assessment models. *Reviews in Fisheries Science*. 18(1): 7-24.
- Zimmermann F. Enberg K. (2017) Can less be more? Effects of reduced frequency of surveys and stock assessments. *ICES Journal of Marine Science*. 74: 56-68.

APPENDIX 1: SSMSE Project Ideas

Below is a list of projects that can be undertaken using SSMSE. This list specifically includes topics that could be led by academic partners (e.g., a PhD student could explore climate change by first building an SDM to understand how a fish stock habitat availability and productivity would be projected to shift, link spatial availability to projected index of abundance via catchability and productivity via recruitment or appropriate mechanism to assessment model, develop an OM for that species using SS3, and complete the MSE across projected catchability/productivity scenarios using SSMSE). Similar lines of research could explore right-weighting assessment complexity or other topics listed below.

- Climate change scenarios -- using the ability to induce time-varying trends in OM params to build climate-influenced projections
- Impact of data availability and quality -- consider removing years of data and/or reducing index CV and comp effective sample size; induce autocorrelated errors in conditioned indices / time-varying q ; optimize sampling design and prioritize data collection
- Test / tune interim assessment approach-- species-specific tests; induce ‘red noise’ in indices (autocorrelation, time-varying q , etc.); explore alternative indicators (e.g., average length of fishery-dependent observations, etc.); tune interim approach to a specific stock (e.g., identify index, tuning parameters, buffers, and refine approach to meet management objectives)
- Test empirical MPs -- build (and test and tune)-your-own empirical MP or other data-limited approach
 - simulation to conceptually demonstrate the value that an empirical MPs could bring to the table: focus on the effect of data-assessment-management lag in current management framework that could be removed using empirical MP; highlight the impact and logical inconsistency of lag for short-lived species
- “Right-weighting” stock assessment complexity -- build complex / real-world OMs (consider including space, climate, episodic events, time-variation and nonstationarity, etc.) and test EMs of various complexity to find the right balance between data availability / model complexity / computational difficulty
- Stock assessment frequency -- test the impact of altering assessment frequency / length of interim assessment period
 - Explicitly include time-lags in data availability and management action
- Foregone yield? -- P^* or other precautionary approaches buffer in the conservative direction; does this leave yield on the table and ‘cook the books’ towards under-harvesting?
- Minimize AAV -- test MP that uses assessment results to scale last year’s TAC; scale previous TAC by B/B_{msy} to get away from instability in biomass estimates from year-to-year; focus on the impact of large cohort dynamics

APPENDIX 2: SEFSC MSE Technical Team TORs

Background:

Management strategy evaluation (MSE) is a simulation approach designed to quantify trade-offs inherent in fisheries and natural resources management. The MSE approach simulates the entire management cycle, including the stock and fishery (operating model), scientific data collection (data-generating or observation model), some feedback indicator process (either model-based such as a stock assessment or empirical such as an index), a control rule that converts the feedback indicator into management advice (catch (or harvest) control rule; CCR), and implementation of the management rule (implementation model). Together, the data-generating, status determination, control rule, and implementation components comprise a management procedure. A signature component of an MSE is that the management procedure is adaptive to stock status and thereby feeds back into the operating model throughout the simulation.

MSEs are a useful framework in which to explore the impact of any aspect of the management procedure on a fishery, including but not limited to data quality, assessment and operating model complexity, form and parameterization of the catch control rule, shifts in allocation, and unexpected errors in management implementation. Natural interdisciplinary MSE extensions include consideration of multi-species and ecosystem effects, climate change, economic optimization, fisher behavior, and protected species management.

MSEs force clarification of management goals, address major uncertainties within the system, promote a long-term view of the resource, and when warranted, facilitate stakeholder participation and buy-in.

Purpose:

Management strategy evaluation simulations can be time- and resource- intensive, typically requiring up to or more than one year to complete and input from many collaborators and stakeholders. As such, we propose the development of a SEFSC MSE Working Group.

Terms of Reference:

1. *Develop a SEFSC MSE Working Group.* A dedicated working group will follow the “technical team” approach to MSEs. This group will meet multiple times a year on a regular basis to plan, prioritize, and conduct research related to MSE. The WG will:
 - 1.1. Maximize capacity to conduct MSEs within the center
 - 1.2. Coordinate MSE activities

- 1.3. Ensure activity alignment with NMFS/SEFSC goals
- 1.4. Ensure appropriate prioritization of MSE activities
- 1.5. Track and document MSE activities within the center
- 1.6. Complete and update SEFSC MSE strategic plan, as necessary
- 1.7. Serve as a group of core collaborators for center-wide MSE activities
2. *The MSE WG will collaboratively perform MSEs* and related research that aligns with strategic priorities for the SEFSC. Highlighted priorities include:
 - 2.1. Capacity development within SEFSC
 - 2.2. Prioritizing data availability / quality / efficiency
 - 2.3. Stock assessment frequency and interim approaches
 - 2.4. “Right-weighting” and “right-sizing” assessment / OM / HCR complexity
 - 2.5. Multi-species / EBFM / socioeconomic considerations
 - 2.6. Exploring management performance in the face of climate change
 - 2.7. Data-limited HCRs
 - 2.8. Considering recreationally dominated fisheries
3. *Member solicitation.* Members should be nominated by supervisors. Members should have an interest in MSE and be willing to collaborate and bring their expertise to the table. Relevant areas of expertise include: stock assessment, ecosystem modeling, social science/economics, fisheries management process, survey design/data collection, computer programming/statistics.